

Date Issued:

•Expires After 90 Days



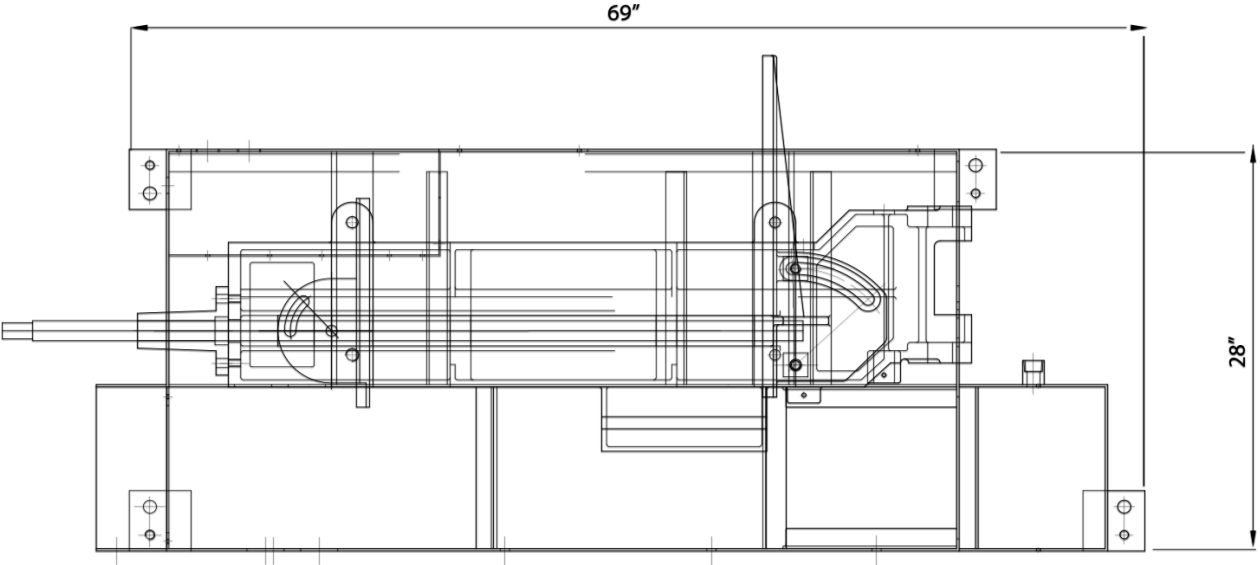
COSEN MH-1018JA

Manual Horizontal
Scissor Style Band Saw

Dealer:
Address:
State:
Zip:
Phone:
Email:

End-User:
Address:
State:
Zip:
Contact Name:

The MH-1018JA comes equipped with a manual vise and adjustable hydraulic down feed. It is an ideal band saw for the small to medium machine shop, maintenance shop, metal fabricating shop, school, and for limited run production work. It is a great machine for cutting square, round, and rectangular solids, as well as tubing material. Its solid construction ensures many years of reliability and accuracy at a high level of performance.



Control System:

The operator's control panel is clearly arranged and centrally located on top of the saw head at chest level which makes it convenient and user friendly. All operator controls are positioned on the top of the control box and clearly labeled for ease of operation. The electrical components are located inside the control box with the main lockout disconnect on the front of the control box for safety and easy maintenance.

Machine Features:

- Hydraulic cylinder plus precision ground hinge support
- Step pulley drive
- Adjustable flood coolant system
- Hardened worm gear for durability
- Carbide blade guides and bearing provides additional blade support
- Rigid cast-iron guide arms
- Cast-iron vise
- Vises can rotate to allow a 45 degree cut
- Blade cleaning chip brush
- Adjustable down-feed control

Machine Specifications:

Maximum Cutting Capacity	Round Capacity	10"
	Square Capacity	9.1" x 9.1"
Blade	Rectangle (H x W)	90°: 9" x 16.5" 45°: 9" x 10"
	Size	11' 6" x 1" x .035"
Motor	Speed	60Hz: 75, 121, 190, 305 FPM
	Saw Blade	2 HP
	Coolant	1/8 HP
Auto. Material Feed System	Job Storage	NA
<i>(Not Available on Manual Saws)</i>	Single Index Stroke	NA
Weight	Multiple Stroke Indexing	NA
		950 LBS
Power		230V, 3 PH 60Hz, 460V 3PH 60Hz (optional)
Floor Space		68" x 29" x 41"
Work Bed Height		25.6

**Please note that machine design and specs can change without notice*

Max AMP Draw - 230V - 6.25
460V - 3.13

Investment Summary

MH-1018JA Manual Scissor Style Horizontal Band Saw.....	\$ 5,495.00
---	-------------

Included Accessories

- Adjustable material stop
- Bi-metal saw blade
- Operation & parts manual

Optional Accessories*

5' stock roller conveyor (RT-5-19LKIT)	\$ 1,295.00		
10' stock roller conveyor (RT-10-19LKIT)	\$ 1,995.00		
Buck Boost Transformer for incoming power of 208V or below (BBT-240D-208D-12.4A)	\$ 1,495.00		
Voltage Change to 460V 3PH	\$ 695.00		

*pricing on optional accessories valid only when purchased with machine. Pricing may differ when purchased individually without machine.

Shipping Cost -----	
----------------------------	--

* Shipping Cost is TBD. Please request a freight quote from logistics@cosensaws.com to add to the cost field if you would like Cosen to handle shipping.

TOTAL INVESTMENT -----	
-------------------------------	--

* Upon receiving equipment, customer is responsible for rigging, electrical hook-up, primary leveling, and any site improvements if needed.

**Optional Accessories Gallery*



Cosen Cool



Heavy Duty Roller Table

Terms and Conditions

Cosen's policy is one of continuous improvements and thus reserves the right to change pricing, designs and specifications of any of our products, without notice or obligations, at any time.

Prices are FOB Port of Entry. The Purchaser is responsible for inland freight charges, rigging, electrical hook up, and all applicable taxes and duties.

Terms and Conditions: Cosen reserves the right to change pricing at any time without notice. Delivery dates are estimates and may vary from those quoted at time of order placement without any penalties.

Payment in full prior to shipment

Cosen reserves the right to specify additional conditions for payment.

WARRANTY (1 Year Parts)

New machines are warranted to be free from defects in workmanship and material for a period of One (1) year from the date of shipment by Seller, or Two Thousand and Eighty (2080) hours of usage, whichever occurs first. Products, which under normal operating conditions in Buyer's plant are defective in workmanship or material, will be repaired or replaced at the option of Seller. This warranty does not cover shipping freight charges for either the return of the defective part or for the shipping of the replacement or repaired part. Seller will have no obligation to repair or replace perishable parts, or materials or parts damaged by misuse, negligence or failure of Buyer to provide appropriate maintenance and service as stated in the operator's manual or industry standard and normally acceptable practices. This warranty does not apply if the machine has been altered or modified without prior written consent of Seller. Seller will not assume responsibility for products or components returned to Seller without prior consent, or for unauthorized repairs to its products. This warranty applies to electrical components to the Buyer only if the voltage supplied to the machine is within the stated voltage of the machine by +/- 10% and grounded at machine.

Accessories Supplied with Manufacturer's Equipment: The warranties available to the Buyer are those provided by the accessory manufacturer, if any, to the extent they are in force and effect. The ACCESSORY MANUFACTURER'S WARRANTY, if any, is exclusive and is in lieu of all other warranties whether written, oral or implied. In the case of components or units purchased by Seller including work holding devices, tool holders, motors and controls, the warranty shall not exceed that received by Seller from the supplier of such components or units, and Seller may require Buyer to seek warranty relief from such component supplier or manufacturer.

THE WARRANTY PROVIDED ABOVE SHALL BE THE SOLE WARRANTY PROVIDED TO BUYER BY SELLER. THE PARTIES AGREE THAT THERE ARE NO WARRANTIES WHICH EXTEND BEYOND THE DESCRIPTION ON THE FACE HEREOF. ALL IMPLIED WARRANTIES INCLUDING THE WARRANTY OF MERCHANTABILITY AND WARRANTY FOR A PARTICULAR PURPOSE ARE EXPRESSLY DISCLAIMED.